

DESIGN SYSTEMS, INC.

Manufacturing Engineering & Consulting

Manufacturing IT Solutions

Genealogy and Build History **Solution Factsheet**

Overview

dsidsc.com/mits

Increasingly complex products, materials and processes, high efficiency demands resulting in shorter cycle times and higher quality targets coupled with surging regulatory compliance requirements has led to a dramatic demand for transparency in the manufacturing process.

Over the last few years we have seen an increasing trend of product recalls resulting in damage to companies' financial standing and reputation.

That's where a well planned containment strategy combined with comprehensive Build History and Genealogy data can provide significant support.



Breakdown

The design of the modern production process must include the ability to record and document each critical step throughout the manufacturing process. Production IT is the ideal solution for this requirement.

During both automated and manual processes, the Genealogy and Build History Solution offers a comprehensive set of tools to collect and accurately store each individual action and result. The collected data provides a complete picture of everything that has happened to the product as it passed through the manufacturing process.

Having this data available is only part of the solution. Another key aspect of this solution is being able to easily use this data to trace a product which may have been affected by faulty materials, processes or any other environmental factors. Our solution provides a carefully designed set of reporting tools which can allow the modern manufacturer to contain issues with minimum impact to both profitability and reputation.

Our Solution

"BOTTOM-LINE" RESULTS

- Reduced risk of exposure
- Better containment of issues
- Increased compliance
- Product build analysis

Genealogy and Build History is part of our new line of Manufacturing IT Solutions. Built on proven, world class technology, these solutions offer off-the-shelf functionality designed to target the typical challenges encountered in manufacturing.

The technologies are highly scalable, cost effective and can be seamlessly integrated into new or existing processes with great ease.

Our Genealogy and Build History tools can help minimize the risks inherent with today's complex products and provide comprehensive containment in the case of a product recall.

DSIDSC.COM

DESIGN SYSTEMS, INC.
38799 WEST 12 MILE ROAD
FARMINGTON HILLS, MI 48331-2903
800-660-4DSI • 248-489-4300
FAX: 248-489-4321

DESIGN SYSTEMS CANADA, LTD.
3585 RHODES DRIVE,
UNIT A
WINDSOR, ONTARIO, CANADA N8W 5B3
519-944-8807 • FAX 519-944-8853

DESIGN SYSTEMS de MEXICO
BOULEVARD RUFINO, TAMAYO #304-A
COL. ALPES NORTE
SALTILLO, COAHUILA, MEXICO CP 25270
O: (011.52) 844-180-2621 • C: (011.52) 844-254-4029

GENEALOGY
and **BUILD HISTORY**

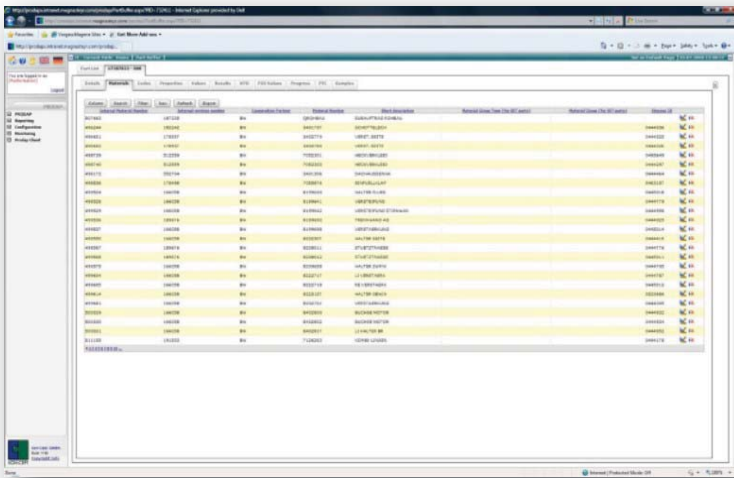
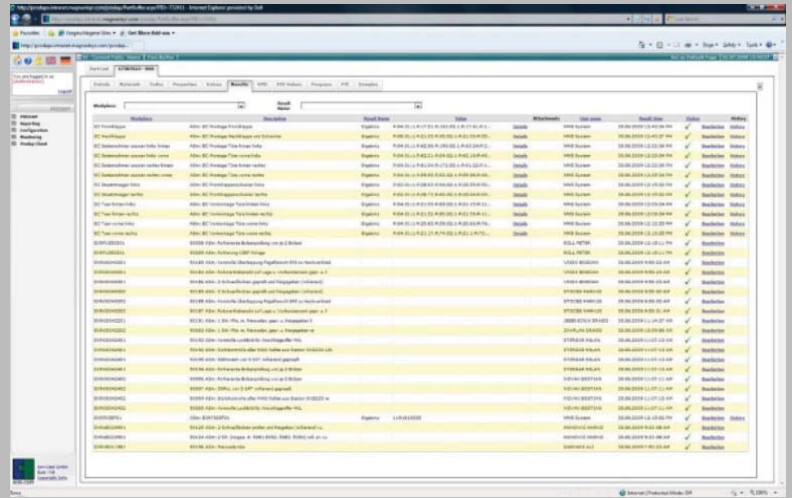


Powered by
KON-CEPT

Dynamic Build History

Electronically record all activities and materials

All data collected during production is stored along with the product order. This data contains process variables, material codes, serial numbers and batch data along with personnel and timestamp data. The information can be used to examine trends in final product attributes based on a specific set of build criteria.



Containment Reports

Accurately identify product lists from material batches

Return all affected products based on material, material batch, process variables or timeframe. This powerful tool can pinpoint the exact set of products affected by a specific set of materials or circumstances.

Material and Batch Scans

Confirm material compliance or record serial numbers

Work steps configured to collect process data - such as material codes or serial numbers - can be set up to test results instantly. Results indicating an issue can force inline corrective action prior to the completion of an operation, thus preventing mistakes from leaving the workstation.

